

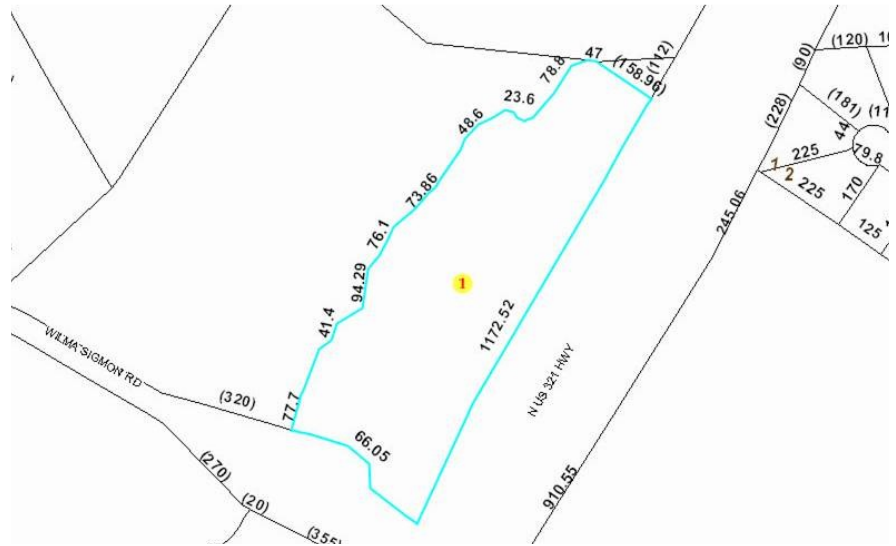
Overview

- The Wilma Sigmon Site is a **8.49 acre** undeveloped site. This site is located approximately 25.1 miles south of I-40 and 16.3 miles north of I-85 and is adjacent to the US 321 Inter-Connector, a four-lane divide, interstate quality highway. This site is highly visible from US Hwy 321.



Coordinates: 35.494302, -81.229804

- Incentives available for qualifying industries
- 8" water lines
- Within 35 minutes of the Charlotte Douglas International Airport and 25 minutes from the Lincoln County Airport
- Utilities
 - Water, Sewer, Electric and Natural Gas and high speed telecommunication and data support
- Close proximity to Major 2 US Highways and Major 4 Interstates



Build-to-Suit

For Sale
\$110,000 for 8.49 Acres

Contact Information:

Business Development Manager
Kara Brown
Phone: (704) 732-1511 Ext. 3
Fax: (704) 736-8451
Email Address:
Kara@lincolneda.org

Lincoln Economic Development
Association (LEDA) Websites
www.lincolneda.org