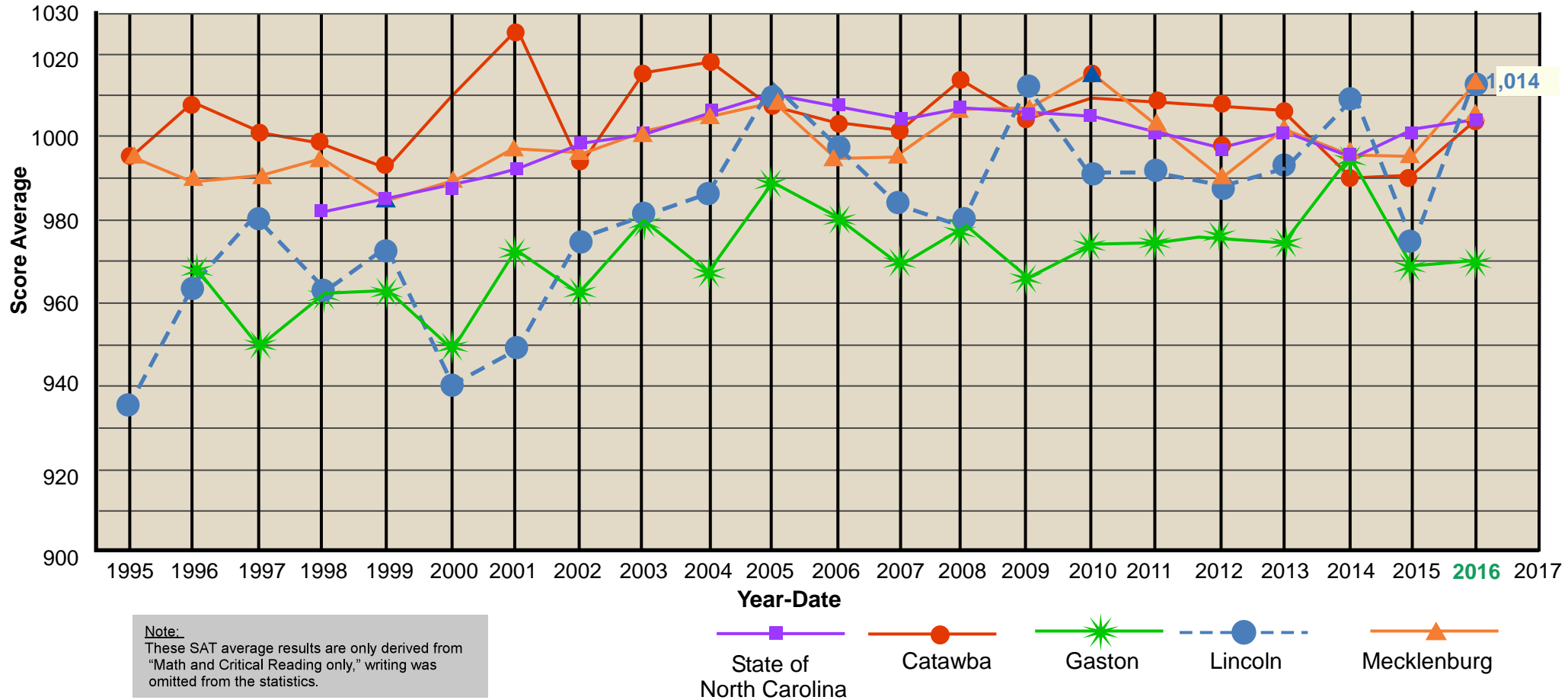


Average SAT Score by Four Area Counties and NC State



Location	1995	1996	1997	1998	1999	2000	2001	2002	2003	2004	2005	2006	2007	2008	2009	2010	2011	2012	2013	2014	2015	2016
Lincoln	934	965	981	963	973	941	949	975	981	986	1,012	997	984	978	1,012	991	991	988	991	1009	973	1014
Catawba	NA	1,009	1,001	999	992	1,010	1,025	992	1,016	1,018	1,008	1,003	1,002	1,013	1,005	1,010	1,008	997	1008	990	990	1006
Gaston	NA	969	950	963	963	949	973	963	980	968	989	982	970	979	967	974	975	977	975	997	969	970
Mecklenburg	996	990	991	994	985	989	997	996	1,001	1,005	1,008	995	996	1,006	1,007	1,015	1,002	990	1002	990	996	1014
State of North Carolina	NA	NA	NA	982	986	988	992	998	1,001	1,006	1,010	1,008	1,004	1,007	1,006	1,005	1,001	997	1001	997	1001	1006

DEFINITIONS & SOURCES

Definitions: Average sum of Critical Reading and Mathematics SAT scores (out of 1600).

Data Source: NC Department of Public Instruction, Accountability Services Division. "The North Carolina SAT Reports." Available on-line at: <http://www.ncpublicschools.org/accountability/reporting/sat/>.

Footnotes: In North Carolina, it is not mandatory for high school graduates to take or report taking the SAT, and therefore one must interpret these data with caution;

Note: To compare student current SAT total scores with total scores prior to 2006, the sum of the critical reading and mathematics subsections are used. The maximum total score on the current SAT is 2400 (800 points for each of its three subsections: critical reading, mathematics, and writing).