

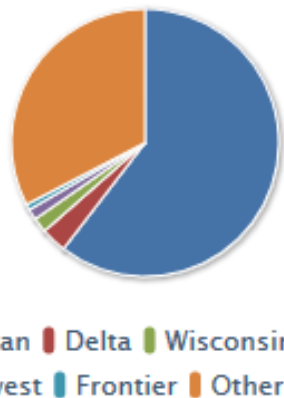
Summary Data (U.S. Flights Only)

Passengers*	2016**	2017**	%Chg	Rank***
Arrival	20,404k	20,143k	-1.28%	7
Departure	20,349k	20,098k	-1.24%	7
Scheduled Flights				
Departures	240,752	241,599	0.35%	6
Freight/Mail (lb.) (Scheduled and Non-Scheduled)				
Total	231m	278m	20.30%	33
Carriers				
Scheduled	24	25	4.17%	

* Scheduled enplaned revenue passengers.
 ** 12 months ending April of each year.
 *** Among 798 U.S. airports, 12 months ending April 2017

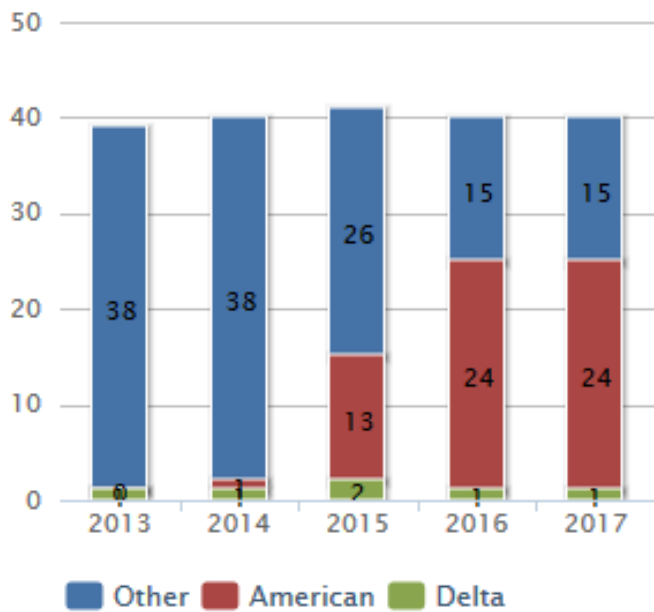
Carrier Shares for May 2016 - April 2017

Carrier	Passengers	Share
American	24,325	60.45%
Delta	1,250	3.11%
Wisconsin	723	1.80%
Southwest	529	1.32%
Frontier	281	0.70%
Other	13,132	32.63%



Based on enplaned passengers(000) both arriving and departing.

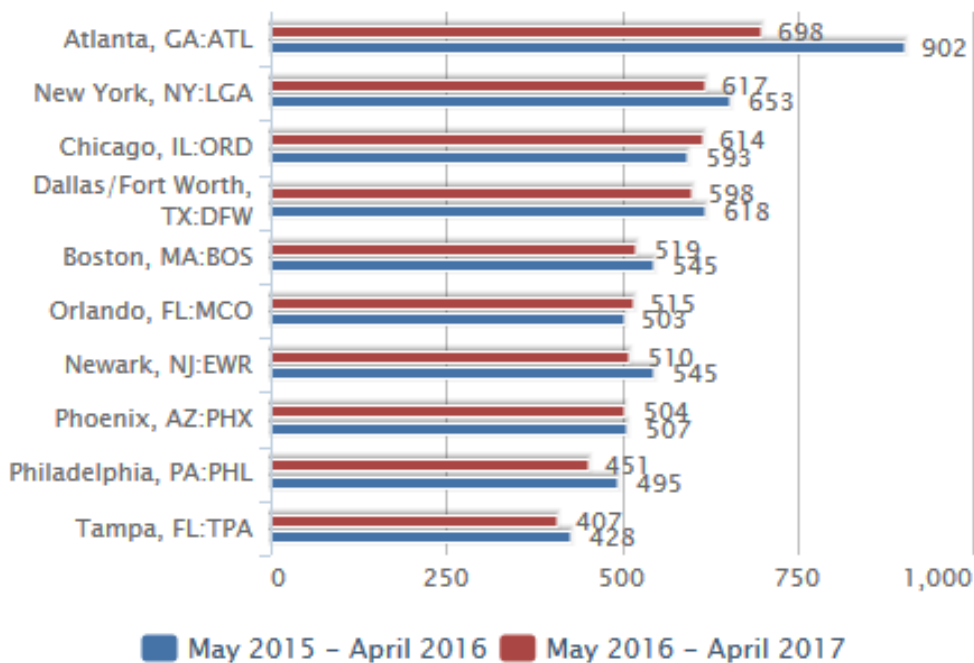
Total Passengers (U.S. Flights, in millions)



* Before October 2002, only carriers operating aircraft with more than 60 seats or 18,000 pounds in payload reported traffic data.

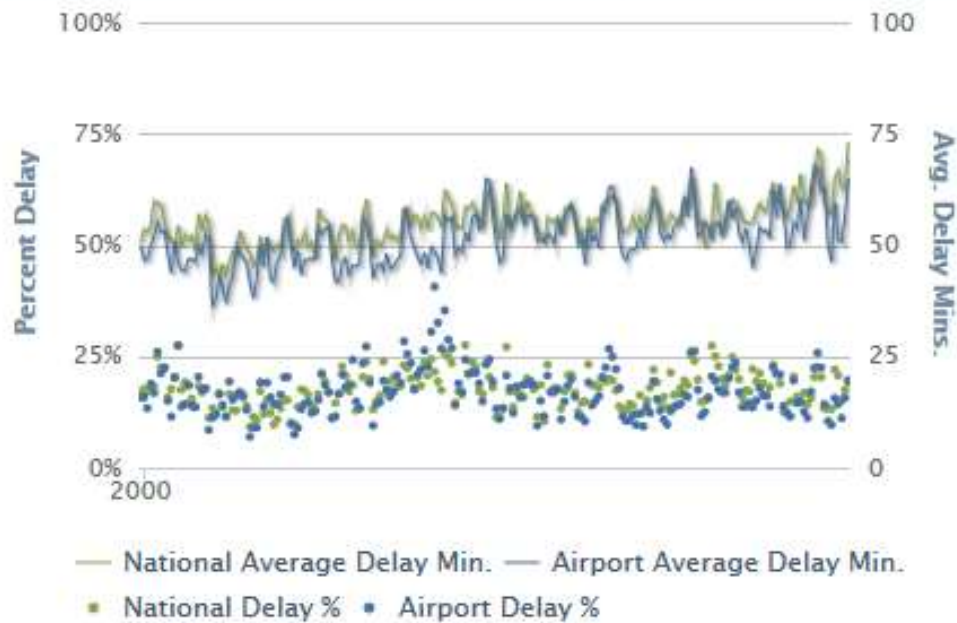
** 2017 represents data for May 2016 - April 2017.

Top 10 Destination Airports (U.S. Only, Passengers (000))



Source: T-100 Domestic Market (US Carriers).

CLT vs. National Departure Delays (Major U.S. Carriers)



A flight is considered delayed when it arrived or departed 15 or more minutes than the schedule. Delayed minutes are calculated from delayed flights only.

CLT On-Time Performance Summary (Major U.S. Carriers Only)

Domestic Flights, 2012-2017

% On Time	2012	2013	2014	2015	2016	2017*	Rank**
Departure	87%	82%	81%	82%	83%	82%	8
Arrival	86%	81%	81%	83%	84%	84%	4
Avg Delay (min.)							
Departure	53.84	56.72	54.23	55.31	60.09	60.40	11
Arrival	49.10	51.26	49.48	50.95	56.55	58.61	10
% Cancelled							
Total	0.81%	1.14%	1.72%	1.00%	1.13%	0.85%	5
Number of Flights (000)							
Total	135.9	148.7	112.2	109.9	110.7	110.9	
Number of Reporting Carriers							
Total	10	12	10	10	8	8	

* May 2016 - April 2017.

** Ranked only for major U.S. airports, May 2016 - April 2017.