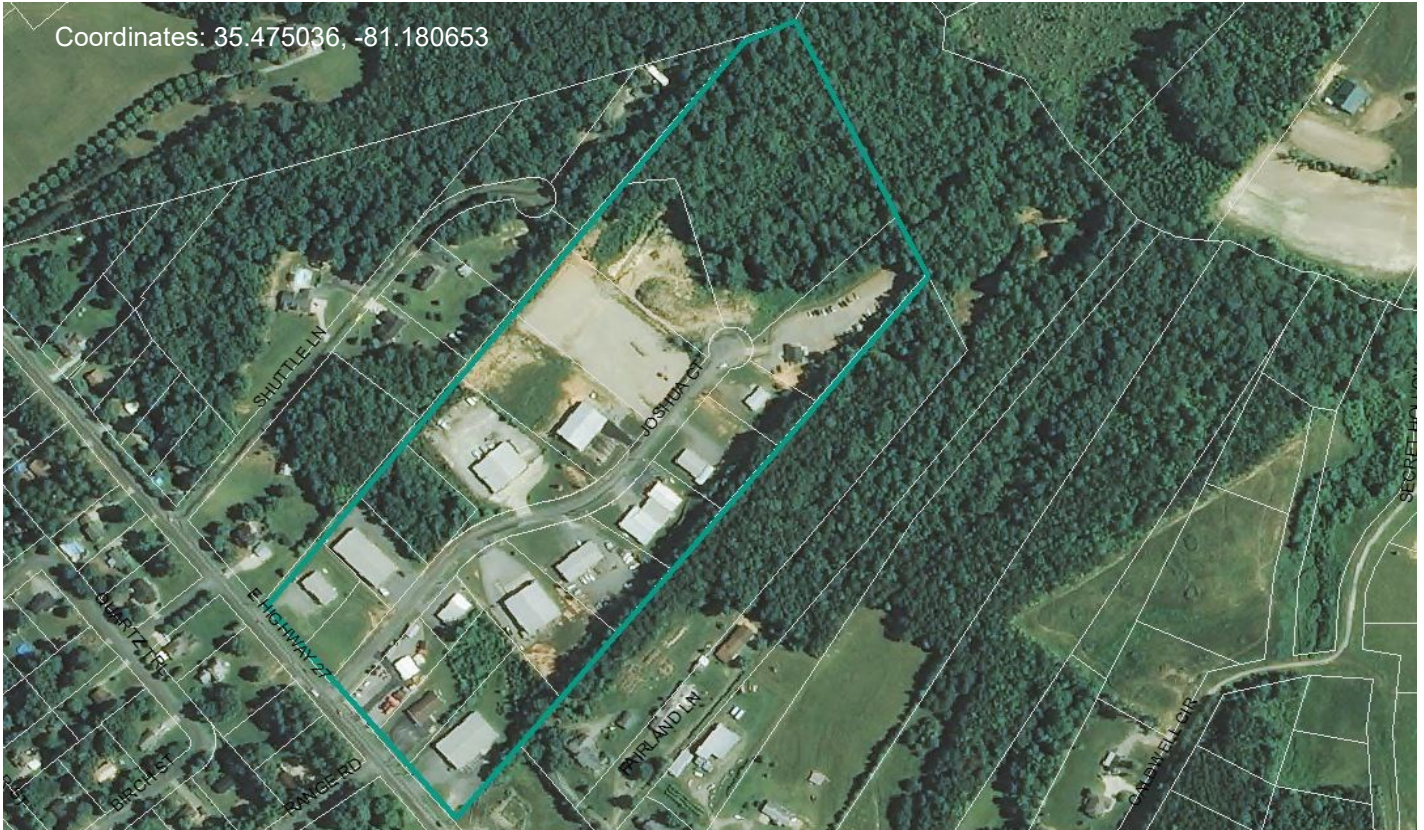


Ross Business Park

Joshua Court, Lincolnton, NC 28092



Coordinates: 35.475036, -81.180653



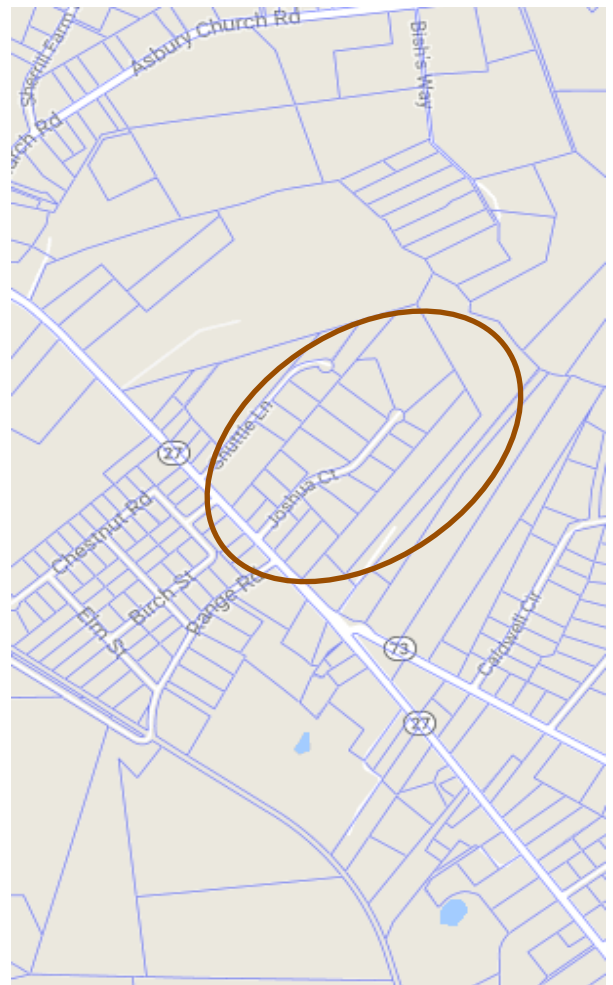
Overview

- Ross Park located approximately 21 miles south of I-40, 17 miles north of I-85, and 2.5 miles from US Highway 321. Only 1 Mile from the Lincolnton-Lincoln County Regional Airport, Ross Park is +/- 26.798 Acres with a few lot(s) available.
- Located Directly on Hwy 27
- Incentives Available for Qualifying Industries

Utilities

- Water
- Sewer
- Telephone Service
- Electrical
- Natural Gas
- Cable/Internet Services

**For Sale and/or Lease:
Call for Availability and Pricing**



Contact Information:

Business Development Manager
Kara Brown
Phone: (704) 732-1511 Ext. 3
Fax: (704) 736-8451
Email Address:
kara@lincolneda.org

Lincoln Economic Development Association
(LEDA) Websites www.lincolneda.org