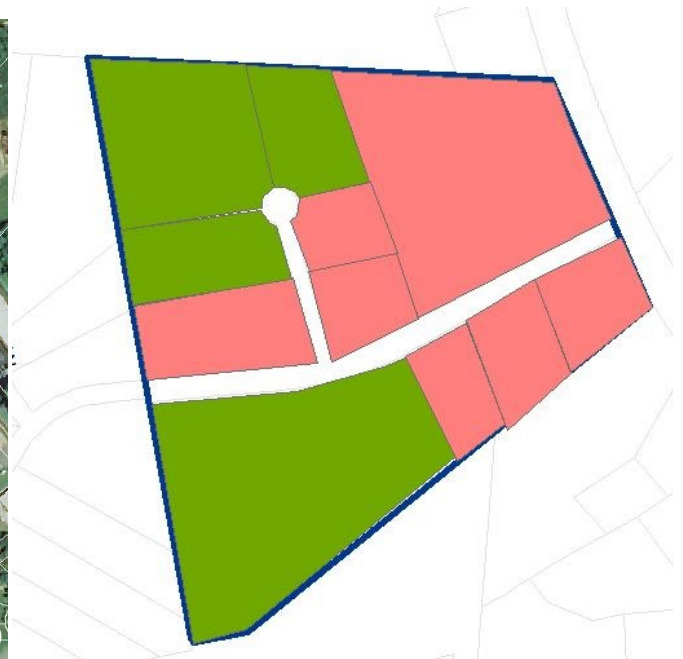


# Park 16

Hagers Hallow Road, Denver, NC 28037



## Overview

Park 16 is located in the Denver, NC along North Hwy 16 Business. Hagers Hallow Drive is Park 16's main road directly off Hwy 16 Business. Park 16 is well established with parcel property still available. Park 16 is +/- 31.475 acres . Lots range from 9.6 Acres to 1.2 acres. Parcel combining maybe considered.

- Located Directly on Hwy 16
- Incentives Available for Qualifying Industries

### Utilities

- Water
- Septic
- Telephone Service
- Electrical
- Natural Gas
- Cable/Internet Ser-

**For Sale and/or Lease:**

**Call for Availability and Pricing**

### Contact Information:

Business Development Manager  
Kara Brown  
Phone: (704) 732-1511 Ext. 3  
Fax: (704) 736-8451  
Email Address:  
Kara@lincolneda.org

Lincoln Economic Development Association  
(LEDA) Websites

[www.lincolneda.org](http://www.lincolneda.org)

